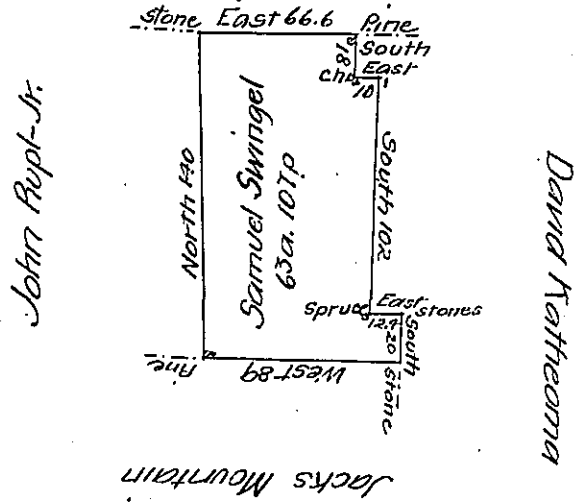


Samuel Swingel  
in right of  
Wm. Frederick



Situate in Hartley township Union county containing sixty three acres  
 & one hundred & seven perches and the usual allowance of six per cent  
 for roads &c. adjoining lands of John Rupt-Jr. Samuel Swingel David  
 Katheorna and Jacks Mountain Surveyed for Samuel Swingel in virtue of  
 his Warrant dated the 2nd of April A.D. 1850 for Eighty acres April 6th  
 A.D. 1850 by

James Madder D.S.

To John Laport Esqr.  
 Surveyor General

IN TESTIMONY that the above is a copy of the original remaining on file in  
 the Department of Internal Affairs of Pennsylvania, made  
 conformably to an Act of Assembly approved the 16th day of  
 February 1833, I have hereunto set my hand and caused  
 the Seal of said Department to be affixed at Harrisburg,  
 this twenty sixth day of February 1907

*Isaac P. Brown*  
 Secretary of Internal Affairs.